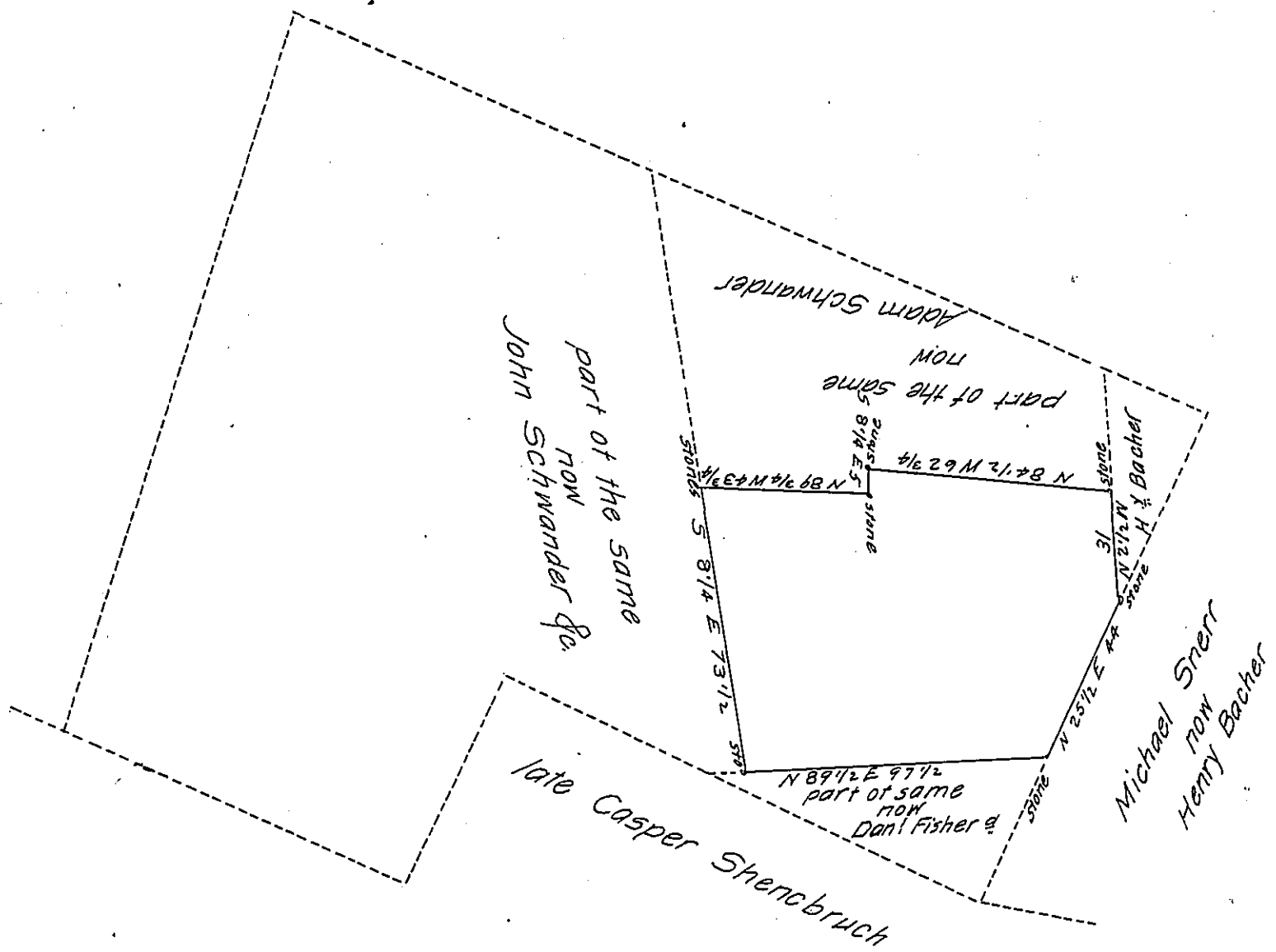


FORM NO. 1.



A Draught of a tract of Land Situate in South Whitehal township in the County of Lehigh Containing Forty one Acres Ninety three perches & All: of Six P Cent &c Being part of two hundred forty three Acres & a quarter Originally Surveyed by W<sup>t</sup> of Novem<sup>r</sup> 17<sup>th</sup> 1752 to Mathias Sheaver the above Resurveyd Dece<sup>r</sup> 4<sup>th</sup> 1826 for John Schwander Ju.

Geo. S Eisenhart

Gabriel Hiester Es.

S.G.

IN TESTIMONY that the above is a copy of the original remaining on file in the Department of Internal Affairs of Pennsylvania, made conformably to an Act of Assembly approved the 16th day of February 1833, I have hereunto set my hand and caused the Seal of said Department to be affixed at Harrisburg, this thirty first day of December 1906

*Geo. S. Eisenhart*  
Secretary of Internal Affairs.